

Key Performance Indicators

Fall 2005 Report:

Focus on Enrollment

University of the Virgin Islands
Board of Trustees Meeting



Prepared by:
Office of Institutional Research and Planning
November 19, 2005



Fall 2005

- Achievements and Challenges
- Major Challenge
 - Enrollment Down

Academic Year Enrollment 2004-2005

	2004-2005		% Change 2003-04	% Change 2003-04
	FTE	CHP	FTE	CHP
Fall	2,158	25,525	↓ 3 %	↓ 3 %
Spring	2,055	24,249	↓ 2 %	↓ 2 %
Summer	522	6,072	↑ 40 %	↑ 41 %
Total	4,735	55,846	↑ 1 %	↑ 1 %

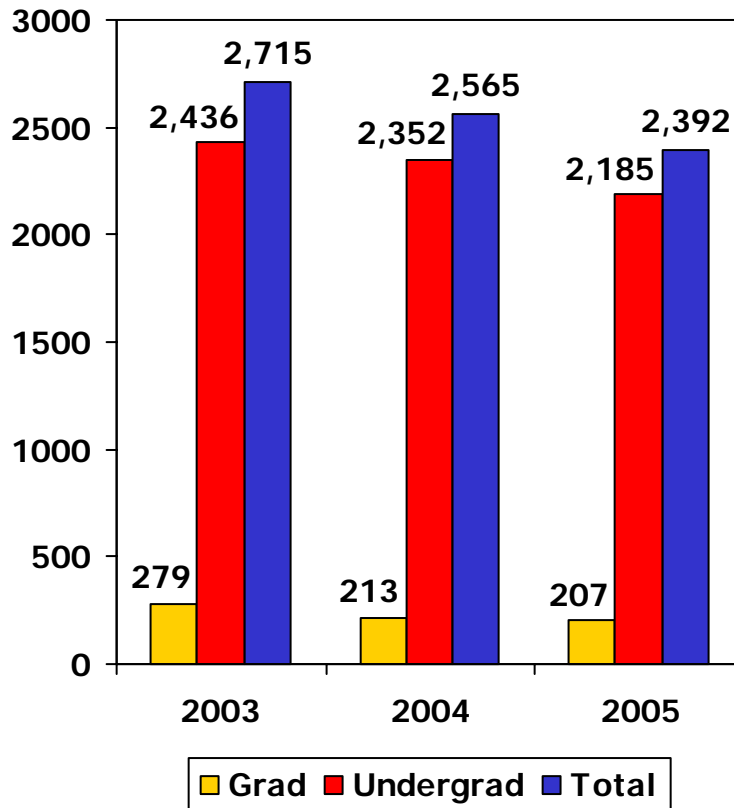
■ AY 2004-2005

■ ↑ 1% CHP+FTE

■ Flat - Headcount

FTE is calculated by dividing the total CHP for each level by 12 (undergrad) or 9 (grad).

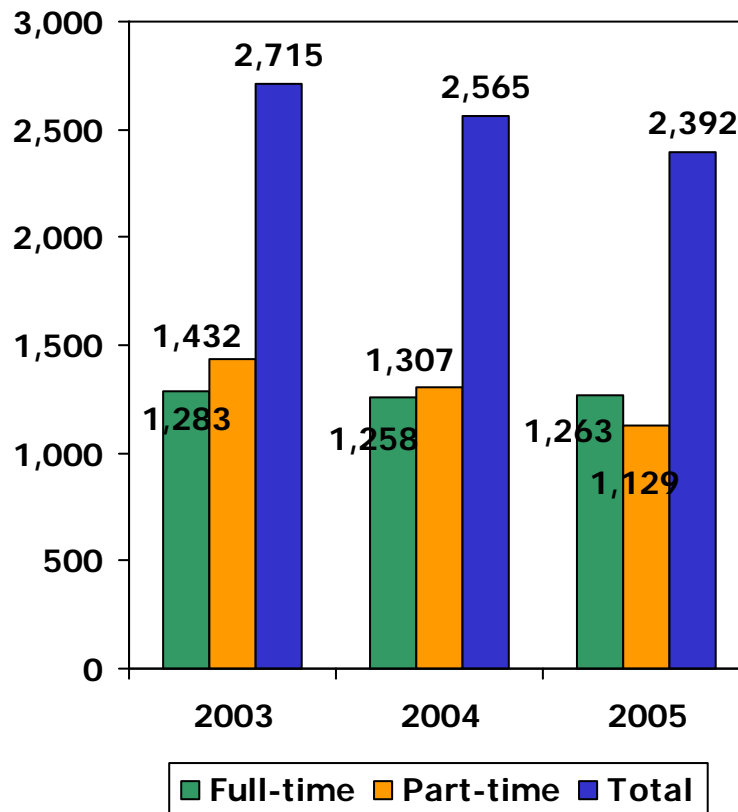
Graduate & Undergraduate Headcount Fall 2005



Fall 2005 vs. Fall 2004

- Total Enrollment ↓ 7%
- Graduate Students ↓ 3%
- Undergrad Students ↓ 7%

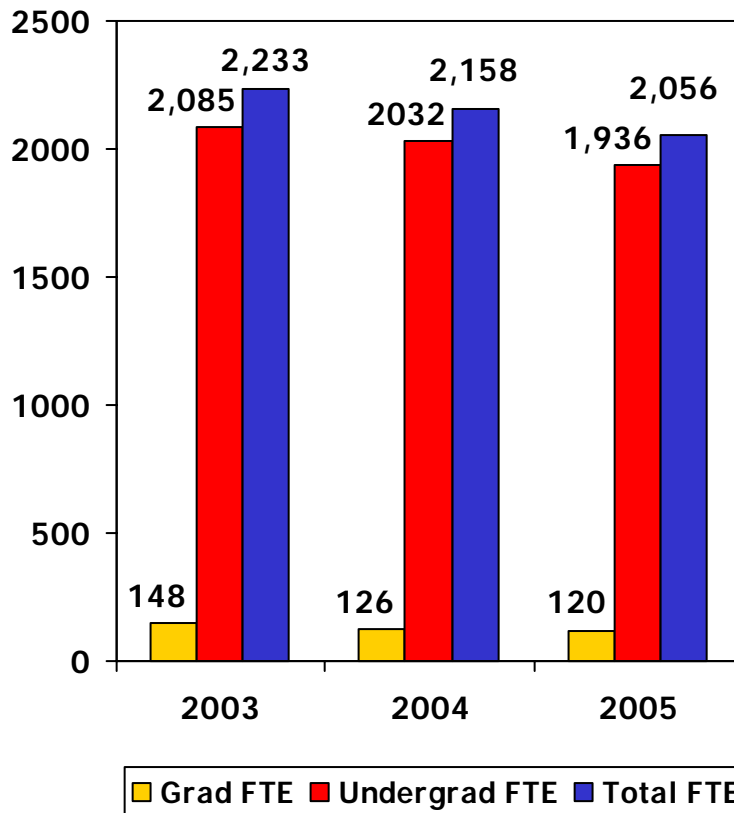
Full-time vs. Part-time Enrollment Fall 2005



Fall 2005 vs. Fall 2004

- Full-time 0.4% from 2004
- Part-time 14 from 2004
- % Full-time
 - 2005 - 53%
 - 2004 - 49%
 - 2003 - 47%
- Full-time exceeds Part-time

FTE Graduate & Undergraduate Fall 2005



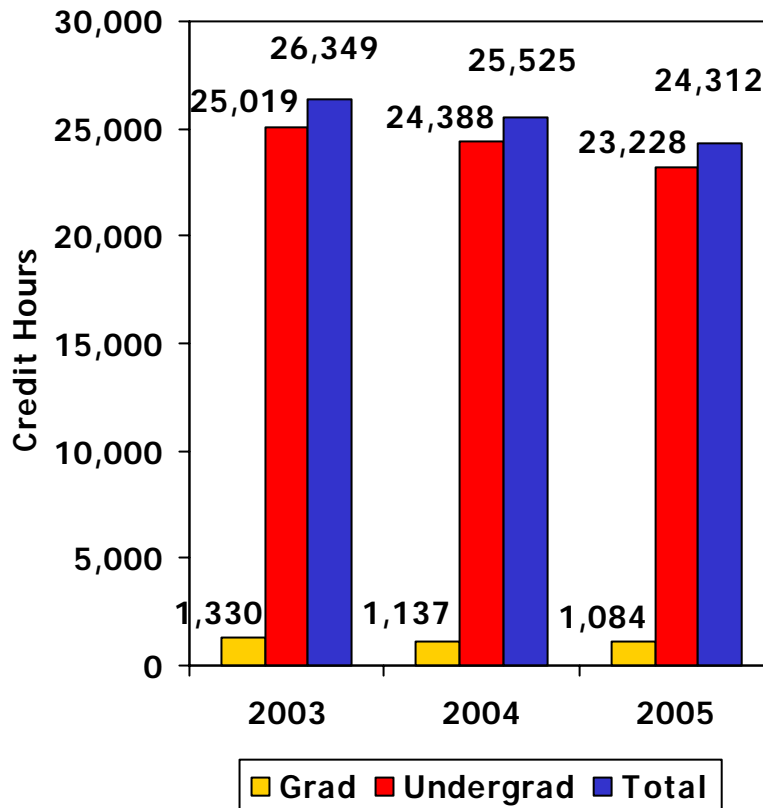
Fall 2005 over 2004

- Total FTE ↓ 5%
- Undergrad FTE ↓ 5%
- Graduate FTE ↓ 5%

FTE = Credit Hours Divided by Full-time Course Load

Credit Hour Production (CHP)

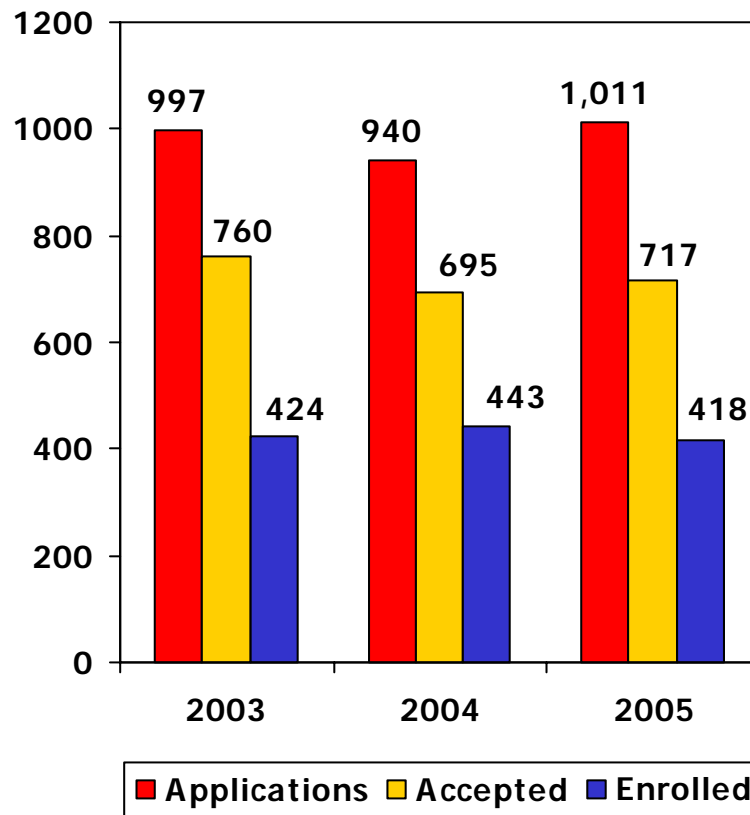
Fall 2005



Fall 2005 vs. Fall 2004

- Total CHP ↓ 5%
- Undergraduate ↓ 5%
- Graduate ↓ 5%

Freshman and Transfer Admissions Fall 2005



Application to Acceptance

- 2005 Yield, 71%
- 2004 Yield, 74%
- 2003 Yield, 76%

Enrolled vs. Acceptance

- 2005 Yield, 58%
- 2004 Yield, 64%
- 2003 Yield, 56%

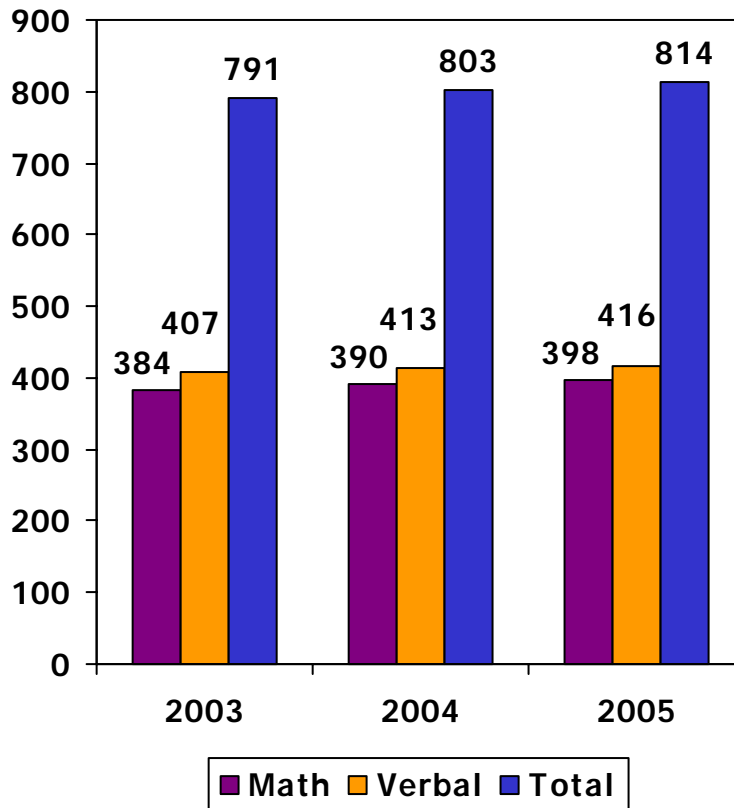
■ Freshmen ↓ 2% from 2004

■ Transfers ↓ 33%

■ International Students ↓ 17%

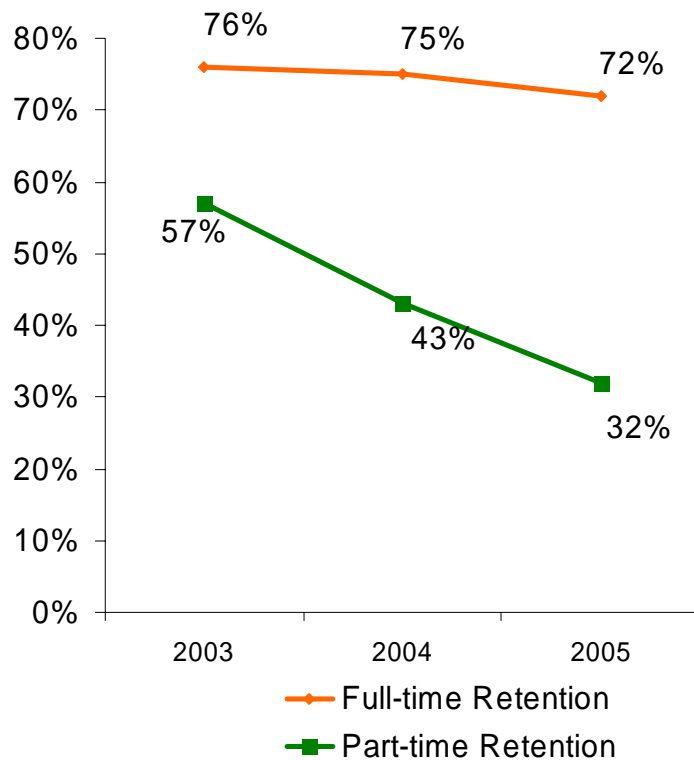
Yield = Enrolled Divided by Application

Average Freshman SAT Scores Fall 2005



- ↑ 11 pts. over 2004,
 - ↑ 23 pts. Over 2002
- Fewer students taking skills
 - 71 % vs. 82 %
- 2003 SAT Peer Comparisons
(25th Percentile)
 - U. Hawaii Hilo 900
 - UVI 791
 - Winston Salem 790
 - Texas A&M 690
 - Delaware State 670

Retention Rates Fall 2005



- 67% National Average

- 72% UVI Retention

- ↑ 11% Peer Average

- Part-Time Students

- ↓ 10% over 2004

- ↓ 25% over 2003

- ↓ 5% Peer Average



Fall 2005 Achievements

- Double Summer Sessions Successful
- Number of Applicants Rising
- Retention Above National and Peer Averages
- SAT Scores Up
- Residence Hall Occupancy Increased
- Decrease in Students Needing Skills Courses
- Annual Fund Goal Exceeded
- Increased % of Trustees Contributing to UVI



Thank You!

Office of Institutional Research and Planning